

## Ways of Giving

Gift Aid: If you are a taxpayer you can use the Gift Aid scheme to boost the value of your donation. Through Gift Aid we are able to reclaim 25p of tax on every £1 that you give per tax year.

Those on a higher rate of tax are able to receive additional tax relief when you donate through Gift Aid.

Phased Gifts and Pledges: Pledges or standing orders over a number of months or years are particularly welcome, as they allow us to budget ahead with confidence. From the donor's point of view, a relatively small monthly sum will soon build up into a substantial gift. Gift Aid can also be applied to this plan.

One off payments can also be made to CAF Bank, Kent, ME19 4JQ  
Sort Code 40-52-40, Account Number 00092420

We are happy to provide pledge forms and further details.

In Memoriam Gifts and Bequests: If you or your family would like to commemorate a loved one, or would like to add St Seraphim's as a beneficiary of a Will, we would be pleased to recognise such support.

Bequests are welcome and can be a tax effective way of treating part of an estate.

Other Gifts: Individuals, churches, and other organisations may wish to organise an event or a collection for the development. Let us know for more information.

Further information on our appeal and how to give is available from:-

St Seraphim's Trust

St Seraphim's Chapel, Station Road, Little Walsingham, Norfolk, NR22 6EB

01328 820610

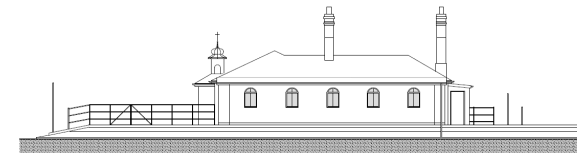
sylvia@iconpainter.org.uk

iconpainter.org.uk

# St Seraphim's Trust



Orthodox Pilgrim Chapel  
Icon and Railway Heritage Museum  
Quiet Garden



Side Elevation (1:100)

## With Your Help

St Seraphim's was founded in Walsingham in 1967. The former railway station, built in 1857 and closed under the Beeching Report, was converted into the chapel. St Seraphim's served as the place of worship to the local Orthodox Community until 1987 when the larger Church of the Holy Transfiguration was opened. St Seraphim's Pilgrim chapel is open daily to all visitors and pilgrims as a place of prayer and reflection and is used by Orthodox priests on pilgrimage with their faithful.

As part of their mission, and in order to financially support themselves and the chapel, iconography became the main activity. Larger commissions were made for churches, both nationally and internationally, while smaller icons were painted for personal devotion. The icons were painted in the traditional manner on gessoed panels, using egg tempera and gold leaf. Icon painting continued until 2009.



Our mission statement: 'St Seraphim's aims to develop collections that reflect the heritage of St Seraphim's (held for benefit of the public and the long term) in a museum environment. To document, preserve, display, interpret and maximise access to the building, collections and garden, thereby promoting the public's understanding, enjoyment and spiritual growth.'

As a small Trust, working towards museum accreditation, funding is urgently needed to help us achieve our aims. We are applying for additional funding from a range of outside sources in order to realise our funding needs of approximately £250,000.

## Our Aims

Completion of necessary repairs to the building: The station building dates from 1857 and now needs a number of repairs to maintain the building. Repairs include to the roof and guttering. The building needs insulating before heating can be installed, to safeguard the building from environmental damage.

Installation of heating and solar panels: The installation of solar panels and air source heating will give the proper conditions to help preserve the icons and railway artefacts, enabling public viewing

Creation of a large permanent display area: In order to properly display the icons and railway artefacts a large open plan display area will be created by removing the internal partition walls to create one permanent display area on the former platform. Some Icons from the collection will be securely hung in the chapel.

Upgrade of the downstairs flat: As a drive to create a sustainable source of income for the Trust we have plans to upgrade the flat on the lower level of the premises to modern standards.

To continue the upkeep of the garden: Final phase is to restore the platform, adding replica benches and lamps, and station sign.

